



**5,460 sq. ft. of Office Space For Lease**  
**3017-3023 Hempstead Tpke, Levittown**



**Specifications:**

**Parking:** Excellent  
**Sewers:** Yes

**Pricing and Timing:**

**Lease Price:** \$25.00/sq. ft. Gross

**Second floor office suite includes private offices, conference rooms, open bullpen and male/female restrooms • Elevator construction estimated to be completed Q3 2025 • Hempstead Turnpike exposure, adjacent to Tri-County Flea Market**



**Chris Ferencsik, Associate RE Broker**  
516-527-3334 (cell)  
631-293-3700 x25  
cf@schackerrealty.com



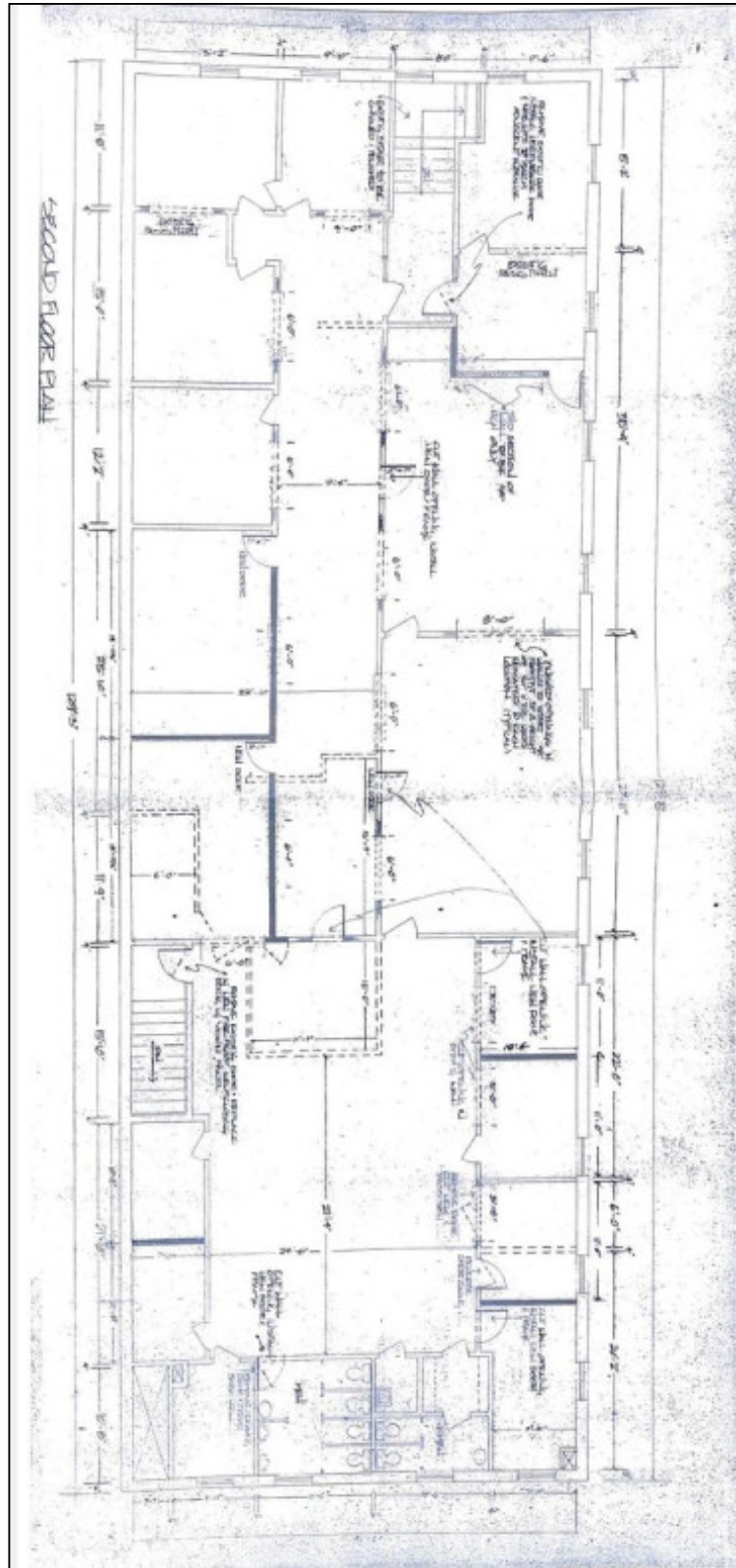
**Anthony Filipelli, RE Salesperson**  
516-312-2339 (cell)  
631-293-3700 x30  
af@schackerrealty.com



All information is subject to errors, omissions, modification, and withdrawal.  
Measurements may be estimates and information shown should not be relied upon without independent verification.



All information is subject to errors, omissions, modification, and withdrawal.  
Measurements may be estimates and information shown should not be relied upon without independent verification.



All information is subject to errors, omissions, modification, and withdrawal.  
Measurements may be estimates and information shown should not be relied upon without independent verification.