

73,445 sq. ft. of Office Space For Lease
Minimum Division 1,000 sq. ft.

26 Harbor Park Dr, Port Washington



Pricing and Timing:

Lease Price: Negotiable

Features and Notes

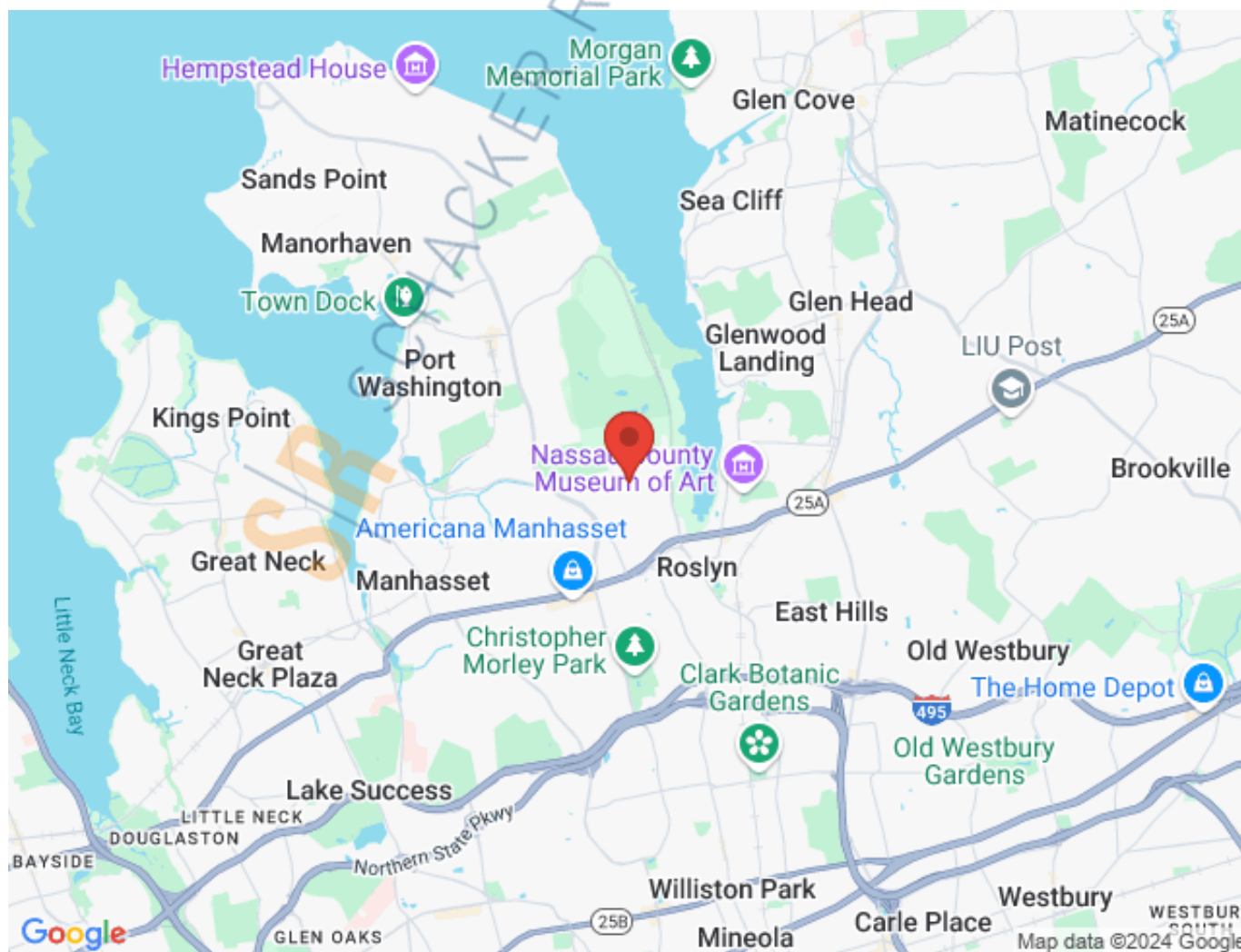
This building has a wealth of amenities including a data center, cafeteria, gym, mail room, reception area and storage space

For more information please contact: Schacker Realty 631-293-3700 info@schackerrealty.com

All information is subject to errors, omissions, modification, and withdrawal.

Measurements may be estimates and information shown should not be relied upon without independent verification.

This advertisement does not suggest that the broker has a listing or has done a transaction in this property or properties.



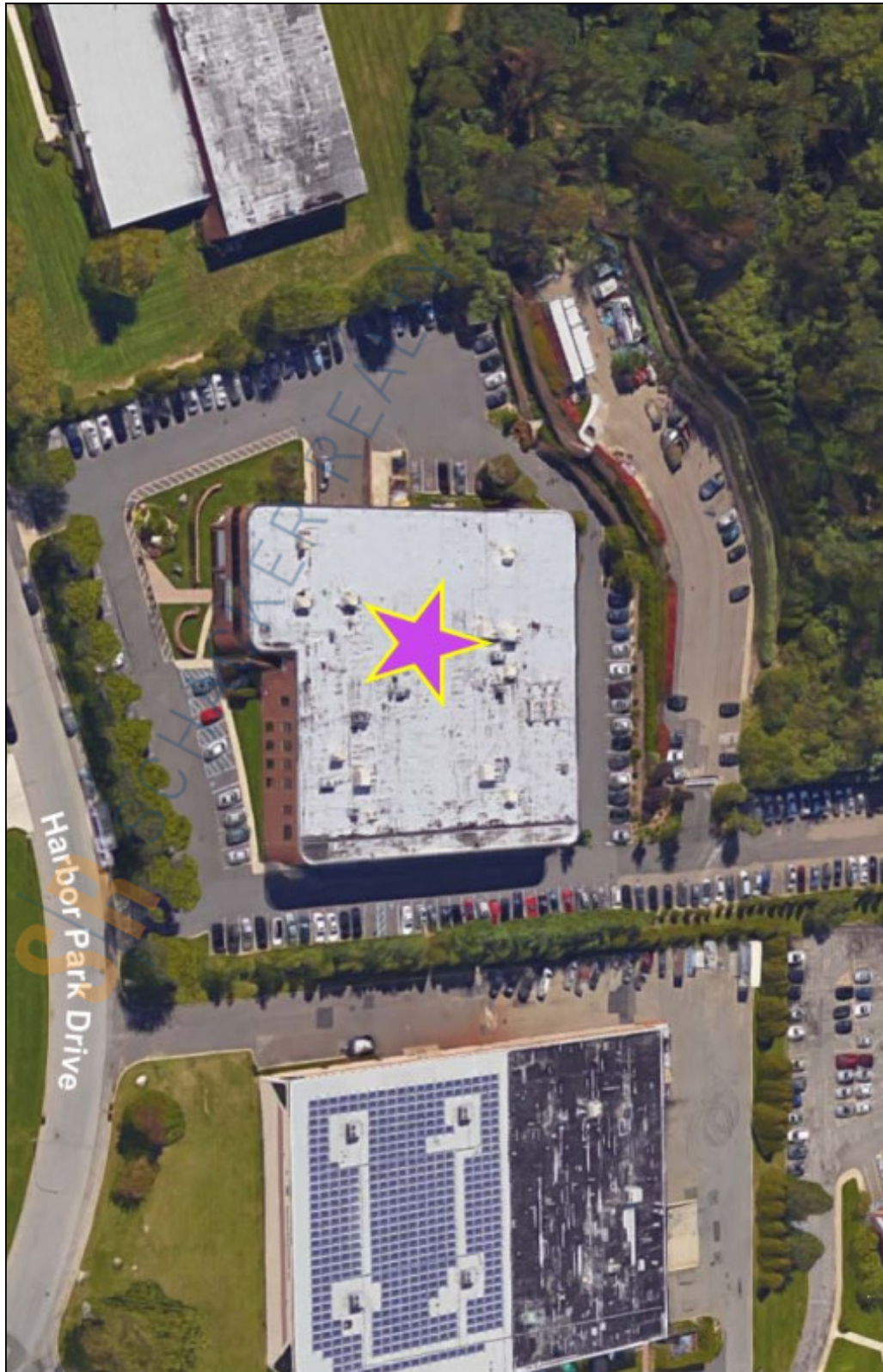
For more information please contact: Schacker Realty 631-293-3700 info@schackerrealty.com

All information is subject to errors, omissions, modification, and withdrawal.
 Measurements may be estimates and information shown should not be relied upon without independent verification.
 This advertisement does not suggest that the broker has a listing or has done a transaction in this property or properties.



SCHACKER REALTY

26 Harbor Park Dr, Port Washington

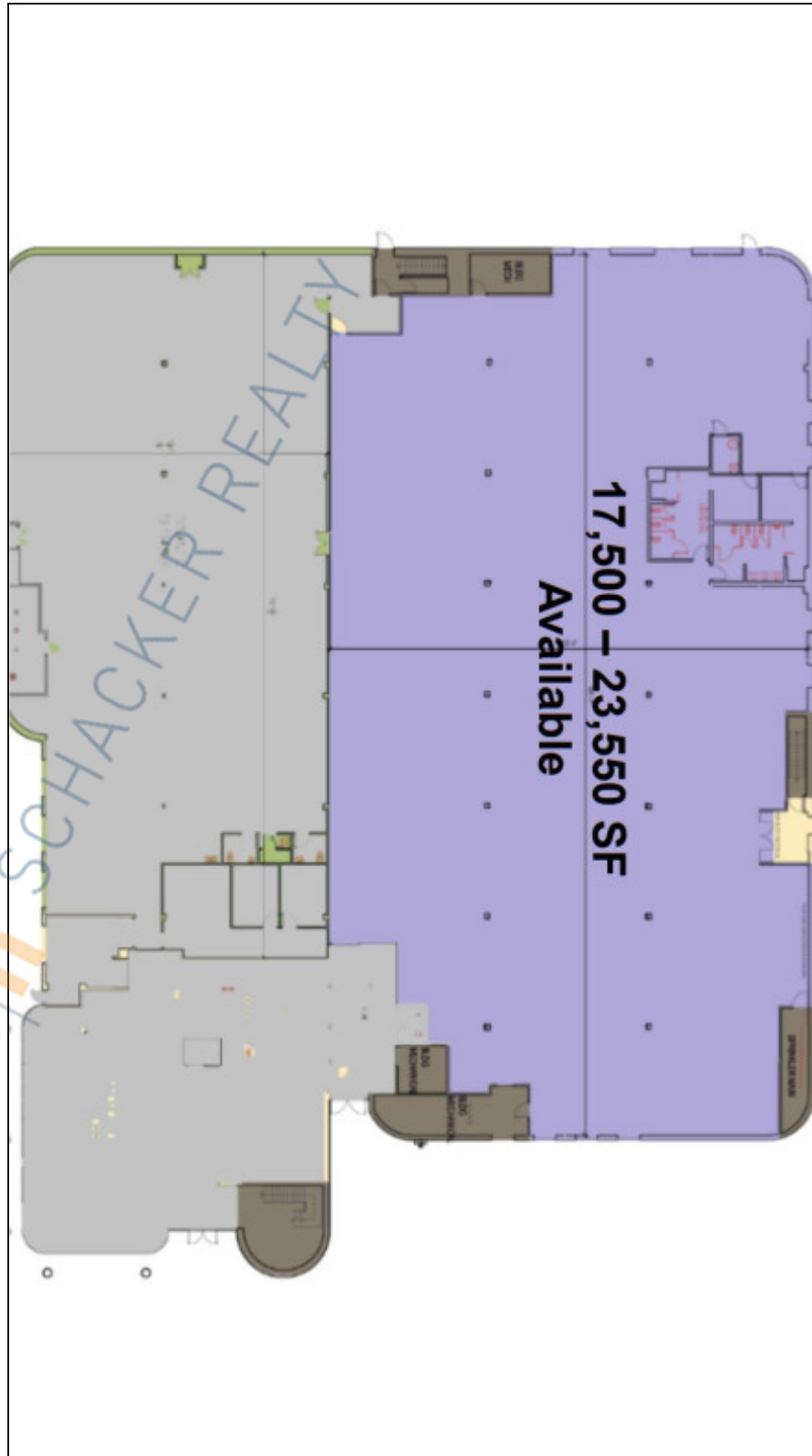


For more information please contact: Schacker Realty 631-293-3700 info@schackerrealty.com

All information is subject to errors, omissions, modification, and withdrawal.

Measurements may be estimates and information shown should not be relied upon without independent verification.

This advertisement does not suggest that the broker has a listing or has done a transaction in this property or properties.



For more information please contact: Schacker Realty 631-293-3700 info@schackerrealty.com

All information is subject to errors, omissions, modification, and withdrawal.
Measurements may be estimates and information shown should not be relied upon without independent verification.
This advertisement does not suggest that the broker has a listing or has done a transaction in this property or properties.