

42,500 sq. ft. of Industrial Space For Lease
205 E 2nd St, Mineola



Specifications:

Building Size: 42,904 sq. ft.
Lot Size: 0.38 Acres
Office Space: 5% BTS
Ceiling Height 1: 26.6' @ 15,667 sq. ft.
Ceiling Height 2: 15.9' @ 2,429 sq. ft.
Loading: 2 Dock(s)
Power: 1,200 amps
Parking: 11
Sewers: Yes

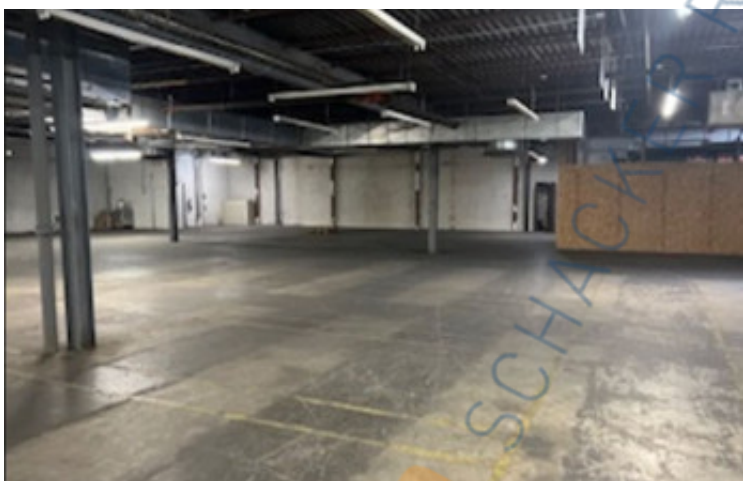
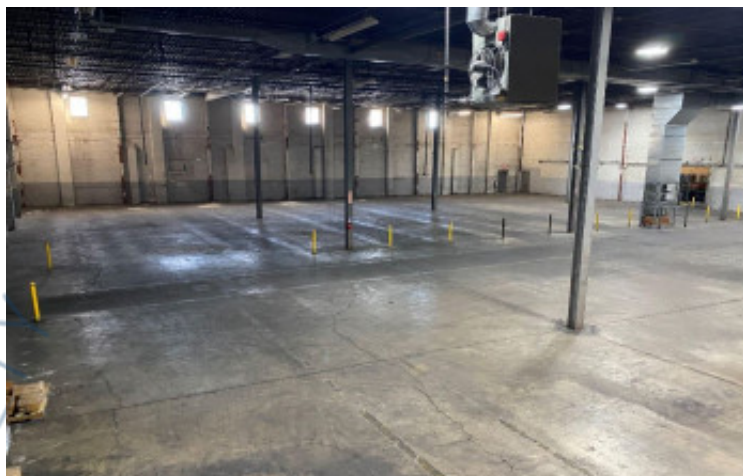
Pricing and Timing:

Occupancy: Immediately
Lease Price: Negotiable

Suite A • Building has multiple ceiling heights • 12,391sf mezzanine included in building square footage • BTS office space (5%) • Proximity to LIE, Northern State, Jericho Tpke and Old Country Rd • Less than a mile to Mineola LIRR • 20-30 minutes to LaGuardia and JFK Airports

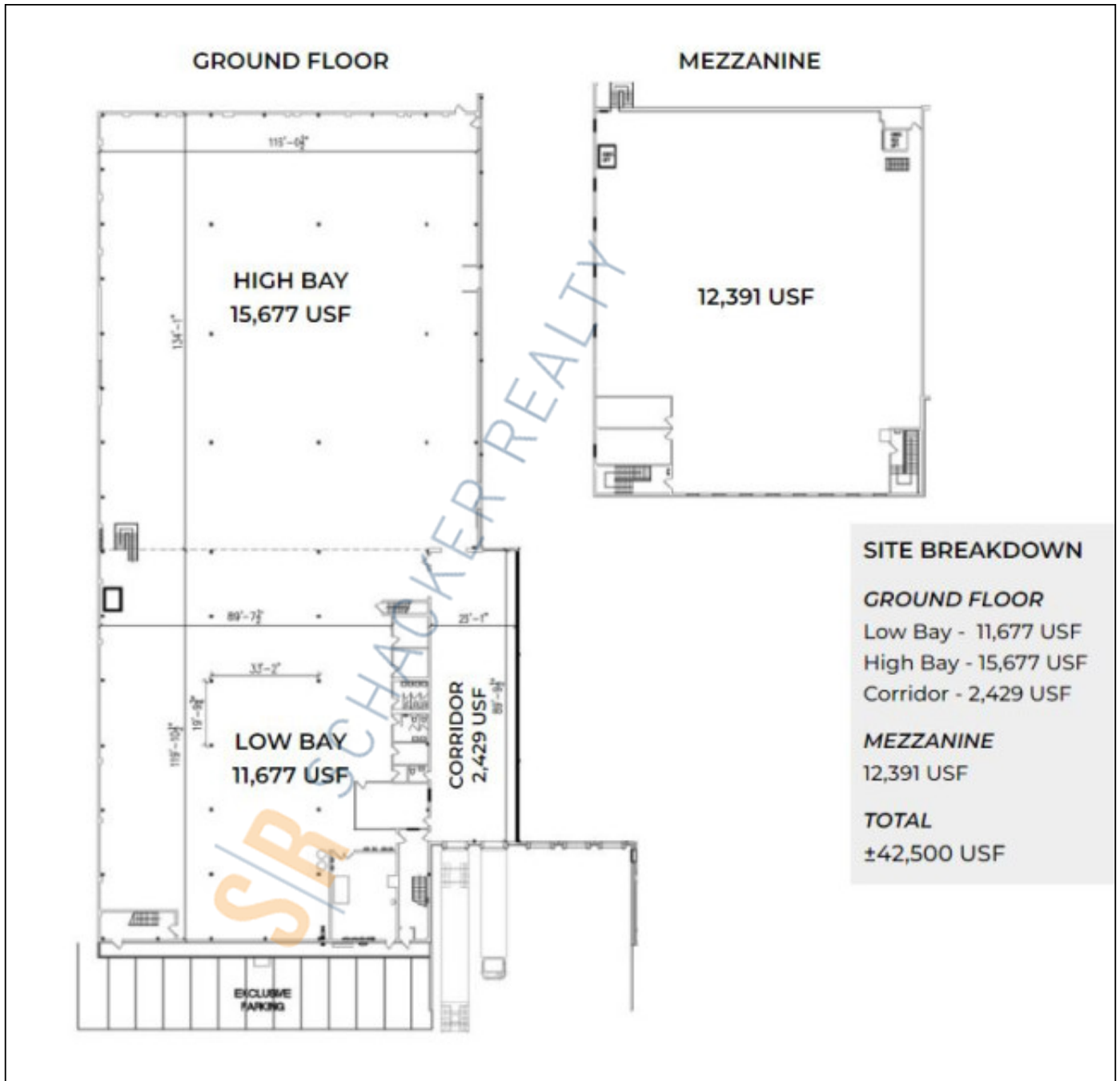
For more information please contact: Schacker Realty 631-293-3700 info@schackerrealty.com

All information is subject to errors, omissions, modification, and withdrawal.
Measurements may be estimates and information shown should not be relied upon without independent verification.
This advertisement does not suggest that the broker has a listing or has done a transaction in this property or properties.



For more information please contact: Schacker Realty 631-293-3700 info@schackerrealty.com

All information is subject to errors, omissions, modification, and withdrawal.
Measurements may be estimates and information shown should not be relied upon without independent verification.
This advertisement does not suggest that the broker has a listing or has done a transaction in this property or properties.



For more information please contact: Schacker Realty 631-293-3700 info@schackerrealty.com

All information is subject to errors, omissions, modification, and withdrawal.

Measurements may be estimates and information shown should not be relied upon without independent verification.

This advertisement does not suggest that the broker has a listing or has done a transaction in this property or properties.