



Land-Industrial/Retail For Sale
122 Bellerose Ave, East Northport



Specifications:

Lot Size: 0.24 Acres

Pricing and Timing:

Occupancy: Arranged
Sale Price: \$350,000
(\$33.48/sq. ft.)
(\$1,458,333/acre)
Taxes: \$5,262.00

Conveniently located at the main entrance to the Northport LIRR station • Great retail visibility from the street and railroad • Rare permissive I-5 General Industry zoning in the Northport area • Adjacent to property on busy Larkfield Rd with 16k daily traffic count

Luca Perinuzzi, RE Salesperson
917-710-3236 (cell)
631-293-3700 x21
lp@schackerrealty.com

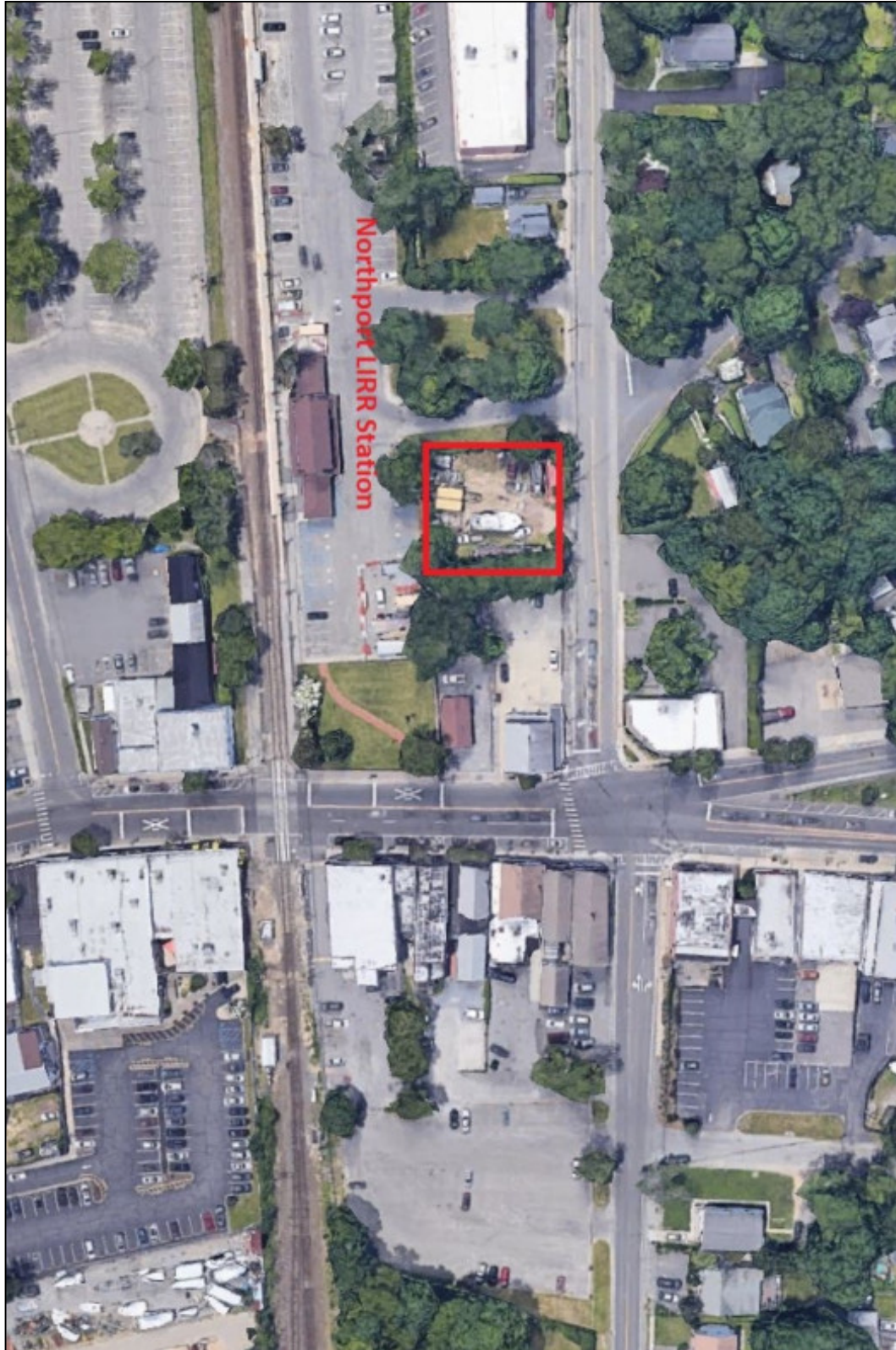
Jeffrey Horn, Vice President, Partner
516-459-8906 (cell)
631-293-3700 x47
jhorn@schackerrealty.com
Real Estate Broker



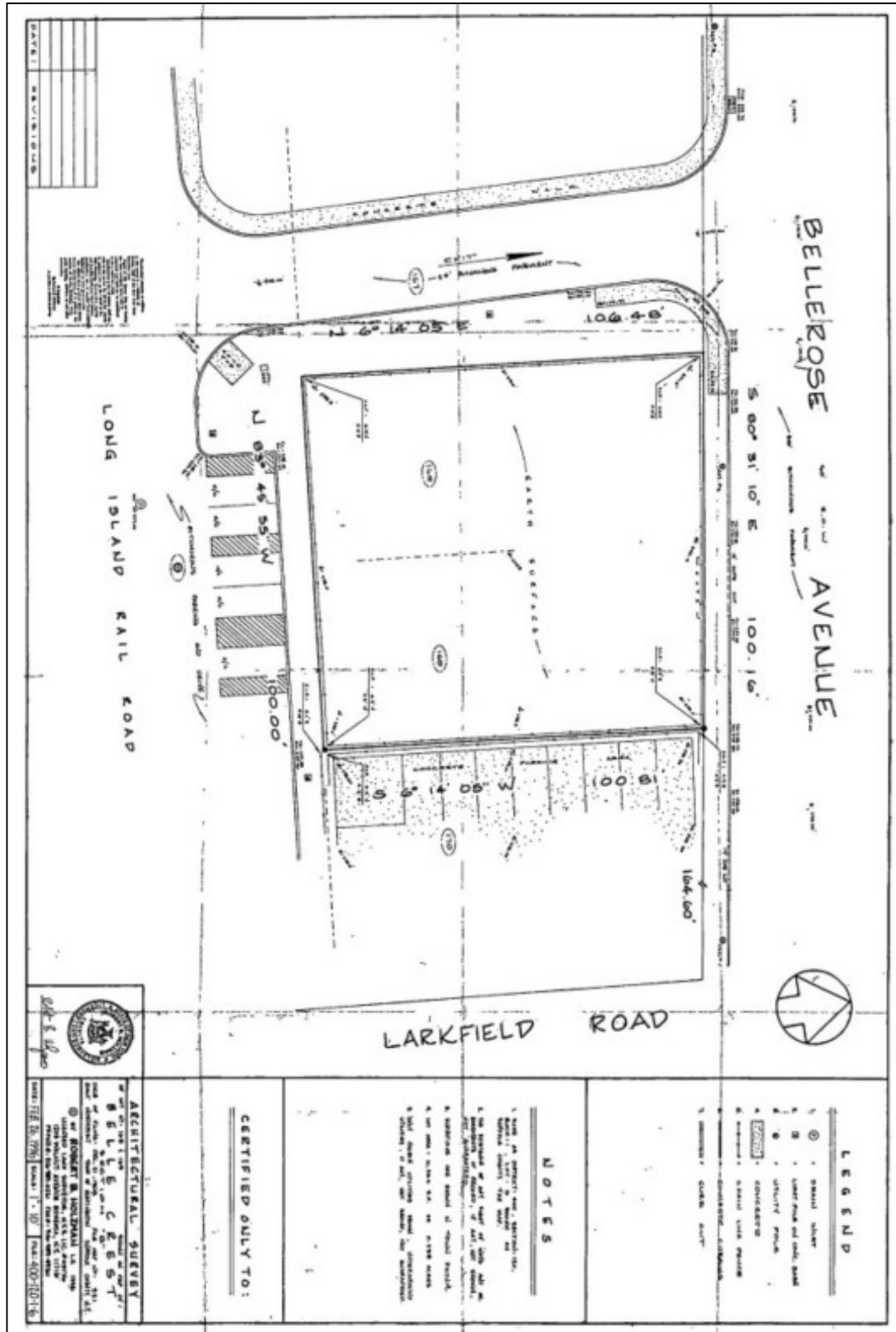
All information is subject to errors, omissions, modification, and withdrawal. Measurements may be estimates and information shown should not be relied upon without independent verification.



All information is subject to errors, omissions, modification, and withdrawal.
Measurements may be estimates and information shown should not be relied upon without independent verification.



All information is subject to errors, omissions, modification, and withdrawal.
Measurements may be estimates and information shown should not be relied upon without independent verification.



All information is subject to errors, omissions, modification, and withdrawal.
 Measurements may be estimates and information shown should not be relied upon without independent verification.