



2,100 sq. ft. of Industrial Space For Sublease
400 Oser Ave, Hauppauge



Specifications:

Building Size: 188,000 sq. ft.
Lot Size: 11.00 Acres
Office Space: 600 sq. ft.
Ceiling Height: 16.2'
Loading: 1 Dock(s)
Power: 200 amps
A/C: Partial A/C
Sewers: Yes

Pricing and Timing:

Occupancy: Immediately
Sublease Exp: 1/31/2027
Lease Price: \$16.00/sq. ft.
Modified gross

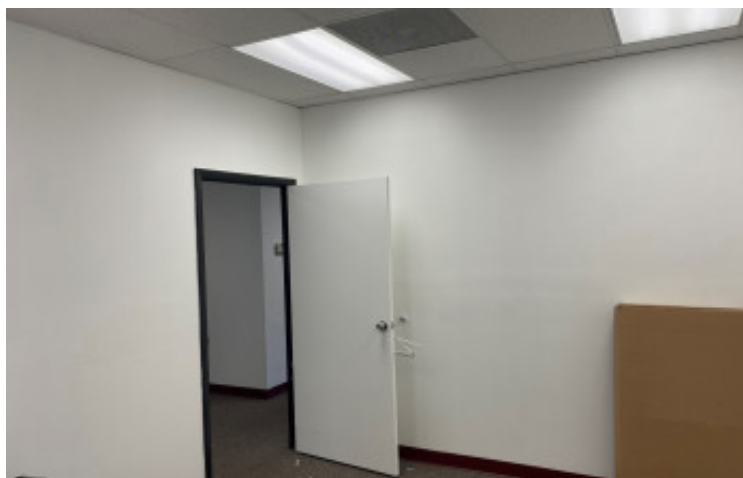
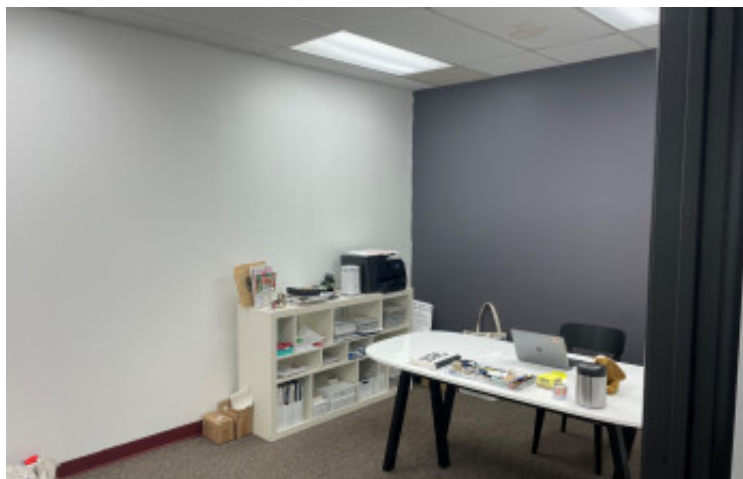
Suite 700 • 1,500 sf warehouse space available • 1 loading dock that can accommodate 53' trailers • 600sf of office space with A/C, private bathroom and bull pen • Conveniently located right off the LIE



Michael Parnes, RE Salesperson
516-732-4074 (cell)
631-293-3700 x29
mp@schackerrealty.com



James Parnes, RE Salesperson
516-732-7864 (cell)
631-293-3700 x45
jp@schackerrealty.com



All information is subject to errors, omissions, modification, and withdrawal.
Measurements may be estimates and information shown should not be relied upon without independent verification.



All information is subject to errors, omissions, modification, and withdrawal.
Measurements may be estimates and information shown should not be relied upon without independent verification.



All information is subject to errors, omissions, modification, and withdrawal.
Measurements may be estimates and information shown should not be relied upon without independent verification.