

9,680 sq. ft. of Industrial Space For Lease
23 Roselle St, Mineola



Specifications:

Building Size: 9,680 sq. ft.
Lot Size: 0.18 Acres
Office Space: 2,480 sq. ft.
Loading: 1 Drive-in(s)
Power: 400 amps
A/C: Full A/C
Parking: 10
Sewers: Yes

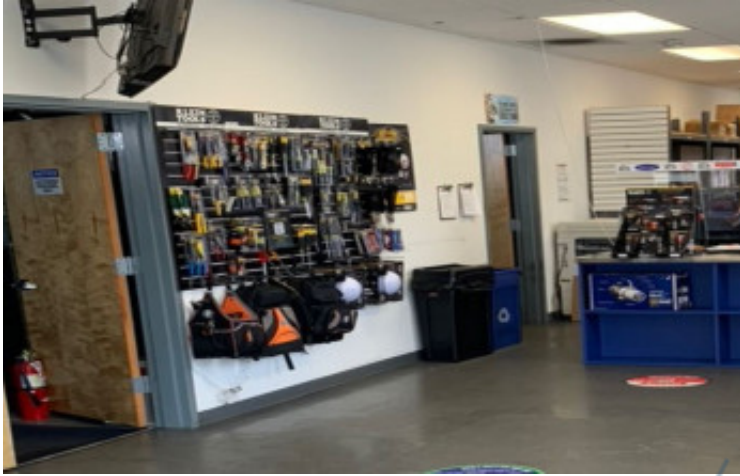
Pricing and Timing:

Occupancy: Immediately
Lease Price: \$21.25/sq. ft. Modified gross

The 2 spaces in this building must be leased together, for a total size of 9,680 sf (contiguous area) • Space is in excellent condition • Ideal western Nassau location, between Jericho Tpke and Hillside Ave • 1st floor warehouse + 2nd floor executive offices • Ultra efficient HVAC system • Large secure parking area • 12' x 14'drive-in

For more information please contact: Schacker Realty 631-293-3700 info@schackerrealty.com

All information is subject to errors, omissions, modification, and withdrawal.
Measurements may be estimates and information shown should not be relied upon without independent verification.
This advertisement does not suggest that the broker has a listing or has done a transaction in this property or properties.



For more information please contact: Schacker Realty 631-293-3700 info@schackerrealty.com

All information is subject to errors, omissions, modification, and withdrawal.
Measurements may be estimates and information shown should not be relied upon without independent verification.
This advertisement does not suggest that the broker has a listing or has done a transaction in this property or properties.