

4 Commercial Ave., Garden City NY



Specifications:

Building Size:	±12,206/sf
Lot Size:	.52 acres
Office space:	±2,000/SF (2 story)
Loading:	2 docks & 2 drive-ins
Height:	±20' clear ceiling height
Power:	400 amps
A/C:	Offices
Heat:	Gas
Parking:	25+ street
Zoning:	C-S (Warehouse)
1 st Floor:	±11,150/sf
2 nd floor:	± 1,057/sf

Pricing and timing:

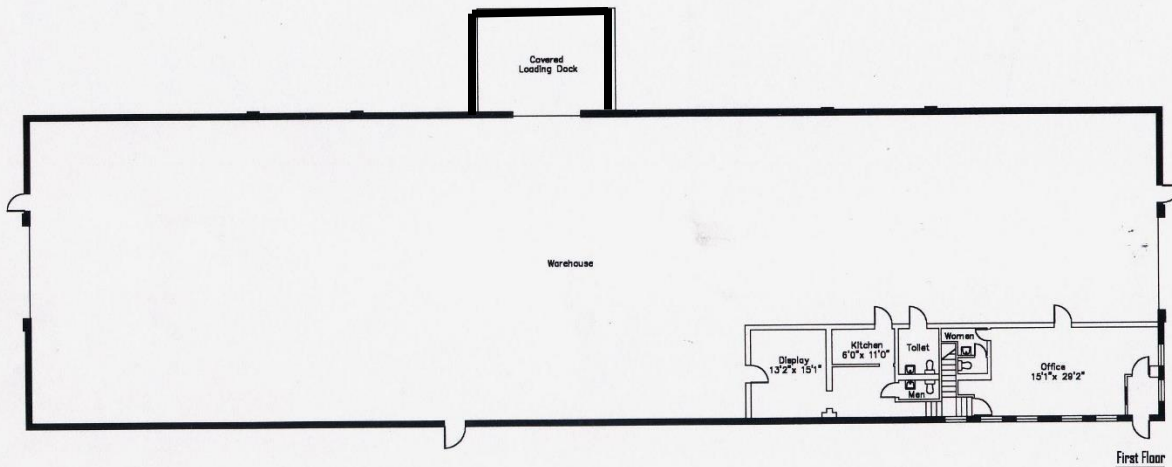
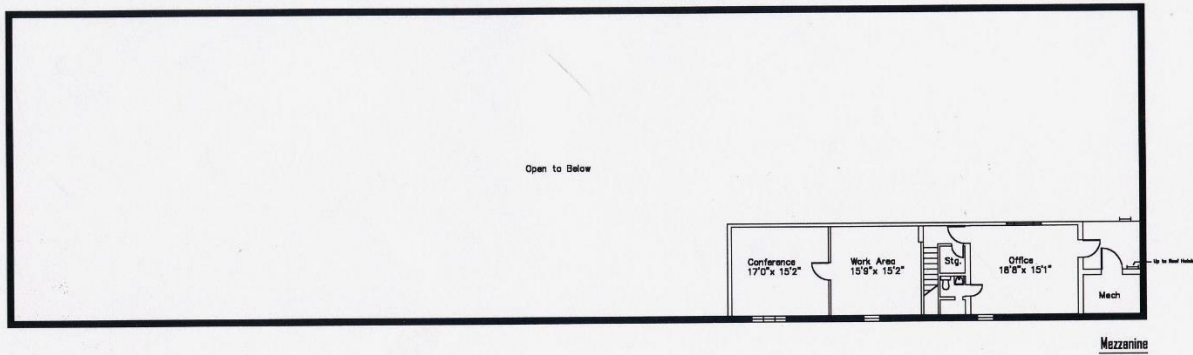
Lease price:	\$21.50/SF Includes base tax
CAM	\$0.25/SF + direct
Insurance	Actual
Occupancy:	±2/1/2025

- Free standing, clear span building
- Fenced yard
- L.I. Expwy exit 39
- Two 16' wide x 14' high Drive-in doors
- Dock equipped with 60,000/lb. electric hydraulic leveler
- Firestone TPO roof warrantied thru 2035
- 1 year old pallet racking for sale

Contact Philip Shwom, licensed real estate broker

Cell: 631-293-3700 or 631-786-4422

pshwom1@gmail.com



4 Commercial Ave., Garden City, NY

